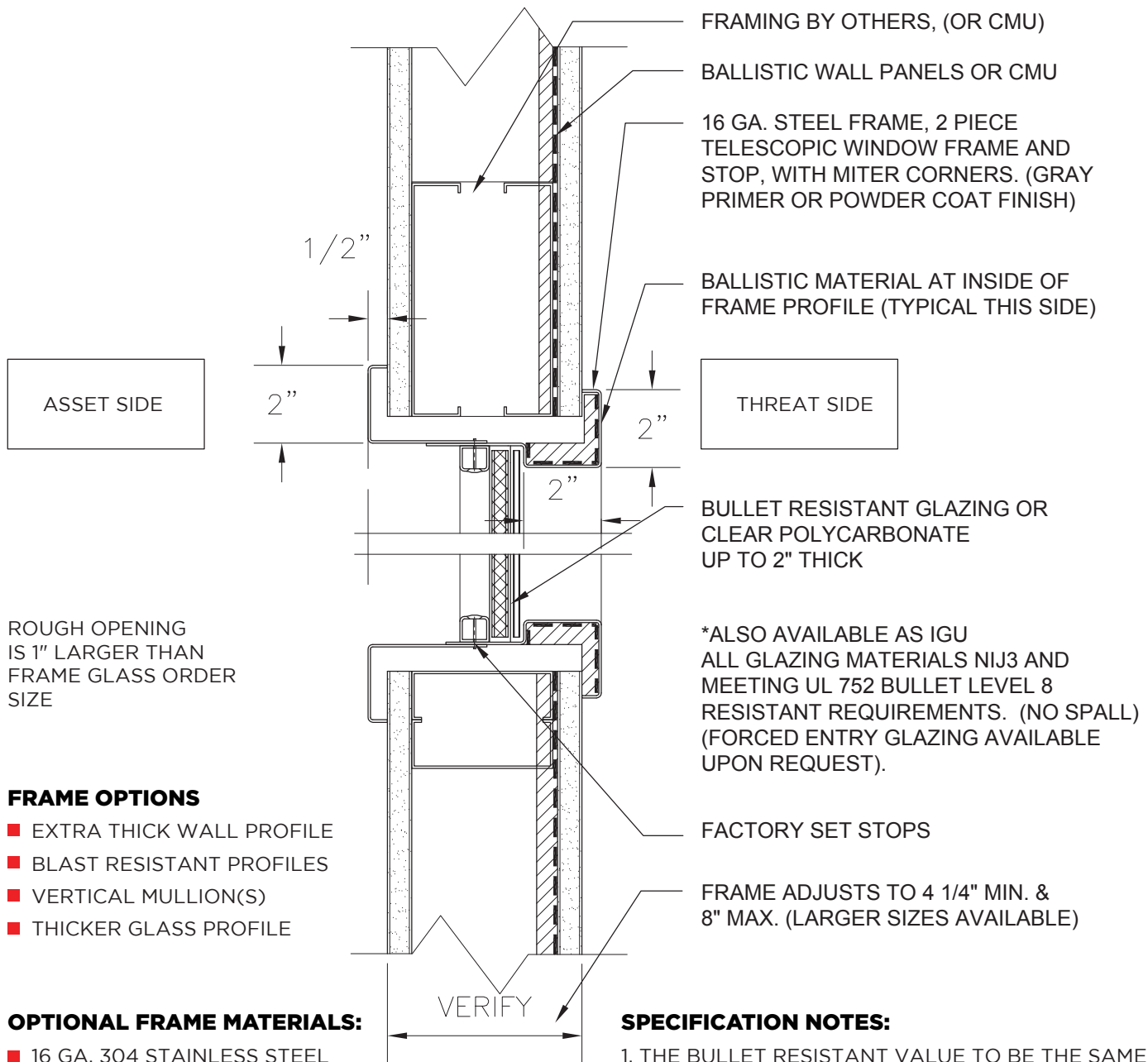


# RAY-BAR BALLISTIC TELESCOPIC WINDOW FRAME (RIFLE) UL8



ROUGH OPENING IS 1" LARGER THAN FRAME GLASS ORDER SIZE

### FRAME OPTIONS

- EXTRA THICK WALL PROFILE
- BLAST RESISTANT PROFILES
- VERTICAL MULLION(S)
- THICKER GLASS PROFILE

### OPTIONAL FRAME MATERIALS:

- 16 GA. 304 STAINLESS STEEL #4 BRUSHED FINISH.
- 063" 5052-H32 ALUMINUM BRUSHED AND CLEAR ANODIZED FINISHES.

FRAMING BY OTHERS, (OR CMU)

BALLISTIC WALL PANELS OR CMU

16 GA. STEEL FRAME, 2 PIECE TELESCOPIC WINDOW FRAME AND STOP, WITH MITER CORNERS. (GRAY PRIMER OR POWDER COAT FINISH)

BALLISTIC MATERIAL AT INSIDE OF FRAME PROFILE (TYPICAL THIS SIDE)

BULLET RESISTANT GLAZING OR CLEAR POLYCARBONATE UP TO 2" THICK

\*ALSO AVAILABLE AS IGU ALL GLAZING MATERIALS NIJ3 AND MEETING UL 752 BULLET LEVEL 8 RESISTANT REQUIREMENTS. (NO SPALL) (FORCED ENTRY GLAZING AVAILABLE UPON REQUEST).

FACTORY SET STOPS

FRAME ADJUSTS TO 4 1/4" MIN. & 8" MAX. (LARGER SIZES AVAILABLE)

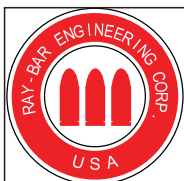
### SPECIFICATION NOTES:

1. THE BULLET RESISTANT VALUE TO BE THE SAME AS THE SURROUNDING WALL OR PARTITION.
- CUSTOMER / INSTALLER MUST VERIFY BALLISTIC PROTECTION LEVEL REQUIREMENT PRIOR TO ORDERING.

1 **RAY-BAR TELESCOPIC BALLISTIC WINDOW FRAME UL8**  
3"=1'-0"

**PATENT PENDING**

Terms of Use: Certain designs and concepts are the exclusive proprietary property and work product of Ray-Bar Engineering provided in good faith as a courtesy for the architectural design of projects specifying, incorporating and utilizing genuine Ray-Bar products and assemblies. Ray-Bar designs are not to be copied, altered, plagiarized or utilized in any competitive or detrimental manner against Ray-Bar as protected by law and/or copyrights. "All Rights Reserved"



JOB NAME :	
LOCATION :	
ROOM NUMBER :	
SHEET ____ OF ____ :	

**TELESCOPIC BALLISTIC WINDOW FRAME UL8**

<b>RAY-BAR ENGINEERING CORP.</b>		SCALE 3"=1'-0" UL8
Toll Free :1(800) 444-XRAY / 1(800) 444-9729		
Telephone: (626) 969-1818		
24 Hour Fax: 1(800) 333-XRAY / 1(800) 333-9729		
website: www.raybar.com		TSVW